

NEW: 2022 Series Filter Assembly

Features

- 316 Stainless Steel construction
- Accepts Pall 2½" diameter elements with M3 seals
- Optional bypass valve
- Flows to 110 Lpm (30 gpm)
- Pressures to: 17.9 bar (260 psi)
- Port size: ¾" and 1"

Notes and Specifications

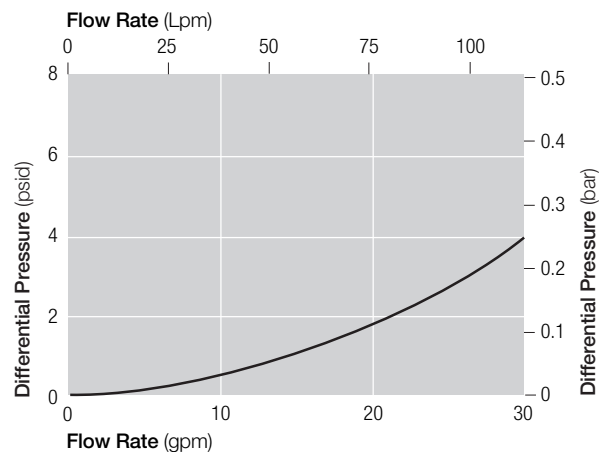
| | |
|----------------------------|--------------------------------------|
| Maximum Working Pressure: | 17.9 bar (260 psi) |
| | 40° C (104° F) |
| Design Pressure: | 13.8 bar (200 psi) |
| | 150° C (302° F) |
| Materials of Construction: | 316 stainless steel |
| Element Construction: | |
| Poly-Fine® XLD cartridges | All polypropylene construction |
| Dynalloy® cartridges | Sintered 316 stainless steel fibers |
| Dynamesh™ cartridges | Woven 316 stainless steel wire cloth |

Pressure Drop Information

Figure 1.

Housing pressure drop.

Housing pressure drop is directly proportional to specific gravity.



Note: For liquid other than water, multiply the pressure drop by the specific gravity of the fluid.

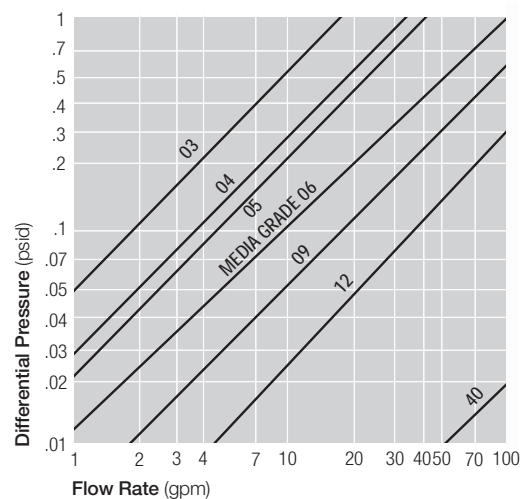


2022 series filter housing

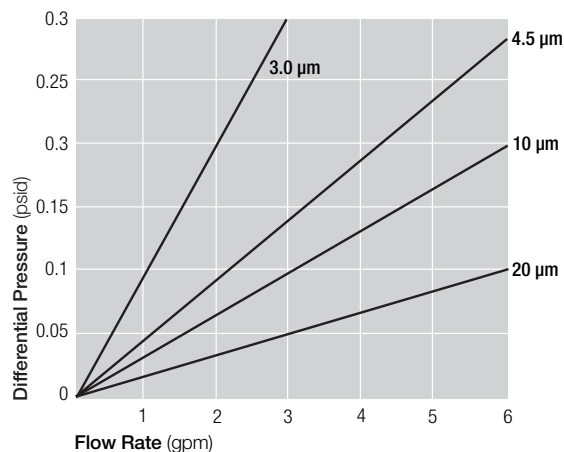
Element Pressure Drop.

For liquids other than water, multiply pressure drop x new viscosity in cSt x new S.G.

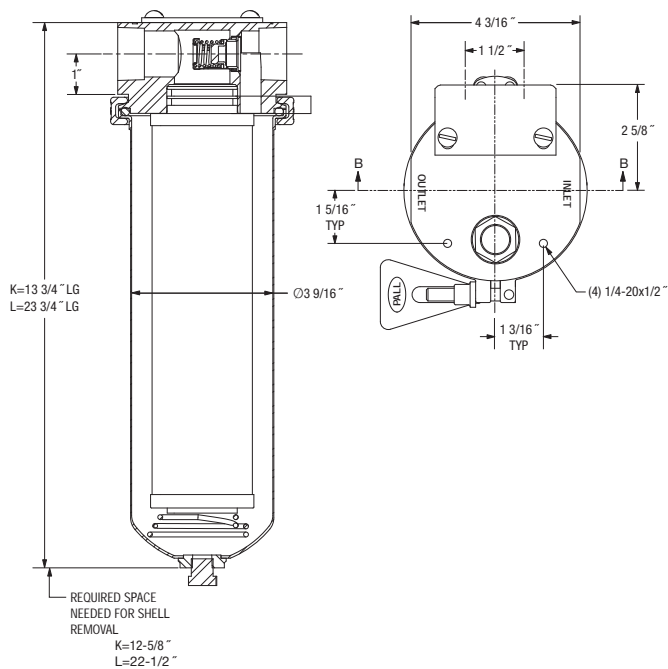
Dynalloy/Dynamesh Series Filter Cartridges



Poly-Fine® XLD Series Filter Cartridges



Dimensional Drawings



Ordering Information

Assembly P/N:

H ☐ 2022 ☐ ++ ☐ ☐ T ☐

Table 1 Table 2 Table 4 Table 5 Table 6 Table 7

Poly-Fine XLD Cartridge P/N:

XLD ☐ - ☐ U ☐ M3

Table 3 Table 4 Table 1

Dynalloy Cartridge P/N:

PSP ☐ - ☐ S M3*

Table 3 Table 4

*Note: O-ring seals must be ordered separately. Order 2 pieces p/n D10540-456 for nitrile, 2 pieces p/n D10540-457 for fluorocarbon

Dynamesh Cartridge P/N:

PWC ☐ - ☐ S M3*

Table 3 Table 4

*Note: O-ring seals must be ordered separately. Order 2 pieces p/n D10540-456 for nitrile, 2 pieces p/n D10540-457 for fluorocarbon

Table 1: Seal Options

| Housing Code | Cartridge Code* | Seals |
|--------------|-----------------|---------------|
| H | N | Nitrile |
| Z | V | Fluoro-carbon |

* Poly-Fine XLD cartridges only

Table 2: Port Options

| Code | Port |
|------|-------------------------------|
| A12 | 3/4" SAE J514 straight thread |
| B12 | 3/4" NPT |
| A16 | 1" SAE J514 straight thread |
| B16 | NPT |

Table 3: Filter Cartridge Options

| Cartridge Series | Code | Rating | Rating Method |
|------------------|------|--------|------------------|
| Poly-Fine XLD | 3 | 3 µm | 99.9% efficiency |
| | 4.5 | 4.5 µm | |
| | 10 | 10 µm | |
| | 20 | 20 µm | |
| Dynalloy | 03 | 3 µm | Absolute |
| | 04 | 4 µm | |
| | 05 | 5 µm | |
| | 06 | 6 µm | |
| Dynamesh | 09 | 9 µm | Nominal |
| | 10 | 12 µm | |
| | 40 | 40 µm | |
| | 70 | 70 µm | |
| | 100 | 100 µm | |

Table 4: Length Options

| Housing Code | Element Code | Length (in)* |
|--------------|--------------|--------------|
| K | 10 | 10 |
| L | 20 | 20 |

* Nominal length in inches

Table 5: Bypass Valve Options

| Code | Valve |
|------|-------------------|
| A | 1.7 bar (25 psid) |
| B | 3.4 bar (50 psid) |
| N | Non- bypass |

Table 6: Differential Pressure Indicator Options*

| Code | Indicator |
|------|-----------------------------|
| E | SST visual with glass cover |
| B | SST port plug |

* Note: Other indicator options available — contact factory

Table 7: Mounting Bracket Options

| Code | Option |
|------|----------------------|
| 0 | none |
| 1 | Mounting bracket kit |



Industrial Manufacturing
25 Harbor Park Drive
Port Washington, NY 11050

888.333.7255 toll free
516.484.3600 phone
516.484.6247 fax

Visit us on the Web at www.pall.com/m&e

Pall Corporation has offices and plants throughout the world in locations including: Argentina, Australia, Austria, Belgium, Brazil, Canada, China, France, Germany, India, Indonesia, Ireland, Italy, Japan, Korea, Malaysia, Mexico, the Netherlands, New Zealand, Norway, Poland, Puerto Rico, Russia, Singapore, South Africa, Spain, Sweden, Switzerland, Taiwan, Thailand, United Kingdom, United States, and Venezuela. Distributors are located in all major industrial areas of the world.

© Copyright 2006, Pall Corporation. Pall, are trademarks of Pall Corporation. ® Indicates a Pall trademark registered in the USA. **Filtration. Separation. Solution.™** is a service mark of Pall Corporation.

Filtration. Separation. Solution.™