



Document Number	PADI 005
Revision Number	1
Date	23 rd March 2018

PALL Aerospace Air Filter Housings

1. Purpose and Scope

- 1.1 This document provides guidance on disposal and recycling of the component parts within Pall Air Filter Housings on completion of the serviceable life.
- 1.2 This document, when read in conjunction with the relevant component maintenance manuals and aircraft maintenance manuals (CMM & AMM) for the unit, provides unit material guidance and disassembly procedures.
- 1.3 This document identifies and gives separate instructions for disposal of electrical or electronic components, in accordance with applicable local legislation and regulatory requirements, including those of European Directive 2012/19/EU (related to waste electrical and electronic equipment).

2. Tools Required

Tools included in a standard aircraft maintenance tool kit plus those listed within the relevant CMM & AMM will be necessary to accomplish this task.

3. Disassembly Method

- 3.1 Isolate and remove the filter assembly or manifold from the aircraft in accordance with relevant AMM instructions.

This will include isolation of unit from the air supply, electrical bonding connections and mounting arrangements

- 3.2 Dis-assemble the filter assembly or manifold in accordance with “Disassembly” section of relevant CMM & AMM.

Ensure consideration is made to the materials or substances that the equipment may have been in contact with during use. The equipment must be decontaminated appropriately in accordance with local health and safety and environmental requirements to ensure safe handling during disassembly.

Comply with all of those requirements, plus the following requirements for safe work and any other requirements specific to the working location before dismantling this equipment, including:

- Observe all safety instructions and warnings.
- Comply with all safe handling and accident prevention measures.
- Ensure that no unauthorised person performs the disassembly and / or disposition operations.
- Wear appropriate personal protective equipment.

- 3.3 Dispose of components in accordance with the materials of construction and hazard classification of the contaminants present.



4. Materials of Construction and Disposition Guidance: Air Filter Housing

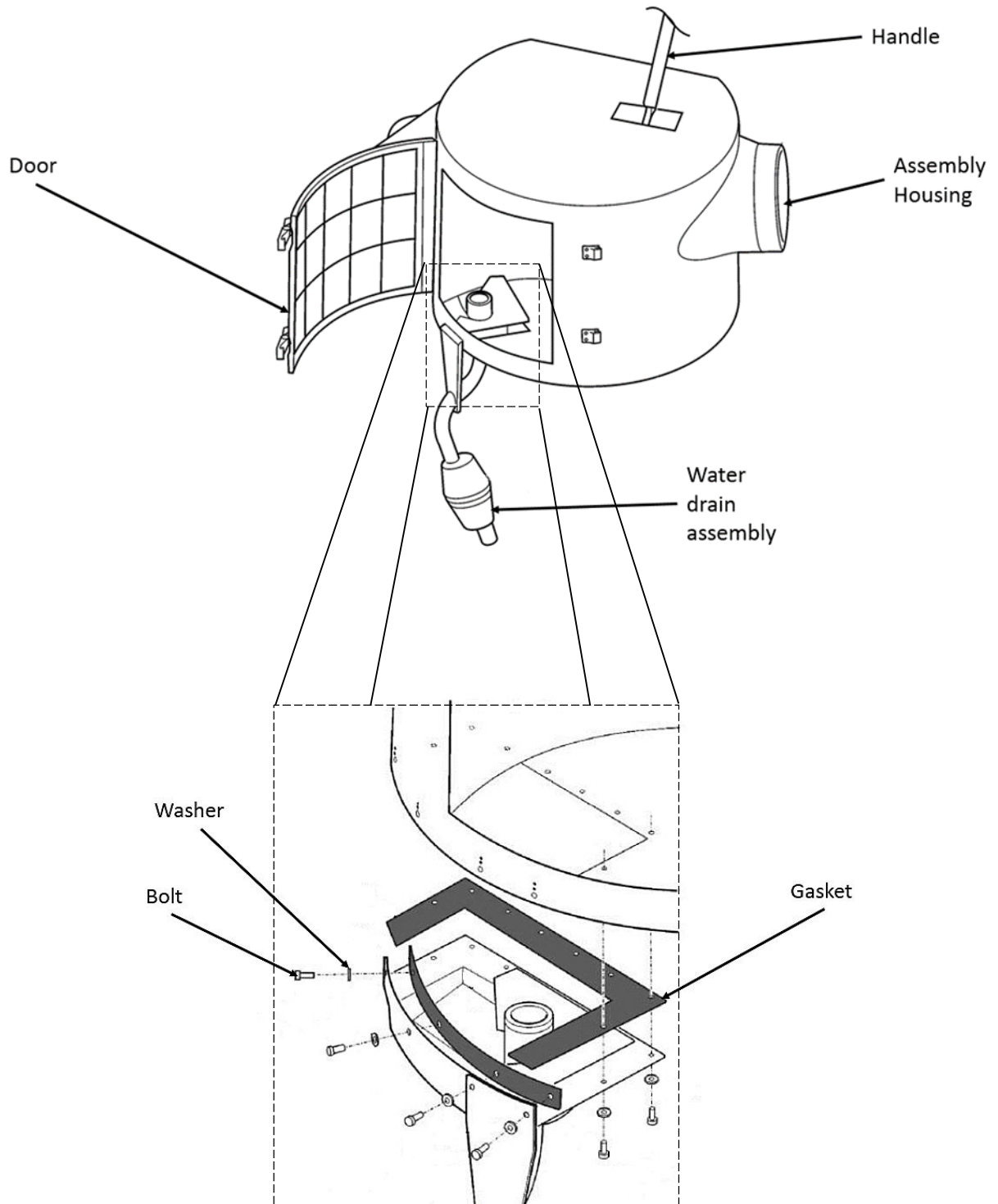
The assemblies show and Figures 1 and 2 are illustrative examples only.

The Air Filter Housing is shown as an example unit, however the actual assembly may have a differing profile that will be machined or sheet metal fabricated.

The equipment in your system will be a variant of the example(s) shown.

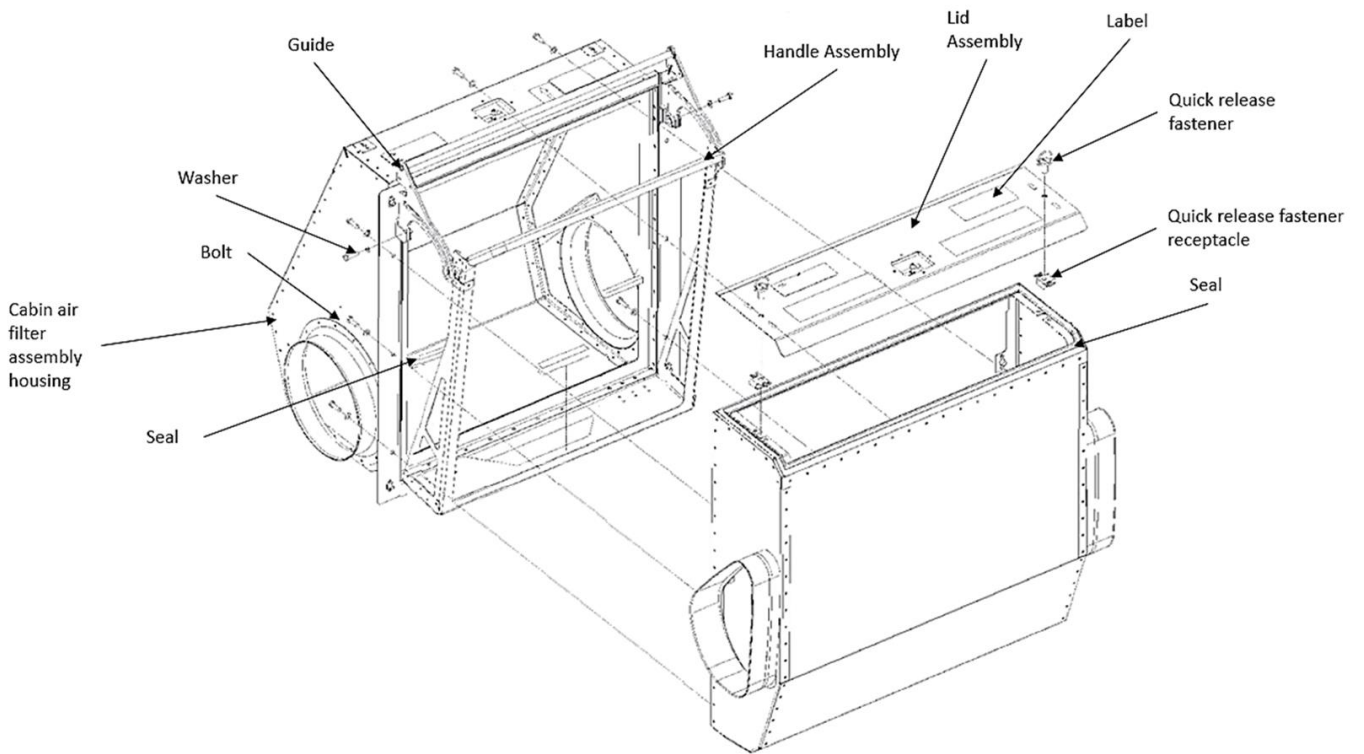
4.1 Filter Housing – see Figure 1, Figure 2.

- This shows a Filter housing (represented as an example unit) with assembled parts exploded to show typical locations.
- Table A provides a generic list of materials and disposition guidance for the Filter Housing components.



Exploded View of typical Filter Housing

Figure 1



Exploded view of typical Filter Housing

Figure 2

Filter Housing (Figure 1)		
Components	Material Type or Information (options that may be included)	Disposition Information
Assembly Housing	Anodised Aluminium Alloy, Polyester, Paint (Epoxy), Carbon steel, Silicone, Cold Drawn Steel Passivated and Cadmium plated (Anchor nut), molybdenum disulphide coated (anchor nut), Monel, Carbon Steel zinc plated, Silicone, PA 66, Stainless Steel, Polycarbonate, Silicone Sponge, Earth compounds, Jointing compounds, Structural adhesives, Sealant	<p>Metallic components can generally be recycled unless permanently contaminated or coated.</p> <p>Disposition should reflect the materials of construction and any contaminants present as the result of use. Dispose of in line with local and national legislation and guidelines.</p>
Handle	Anodised aluminium alloy, Stainless steel	
Door	Anodised aluminium alloy, stainless steel, passivated stainless steel, cadmium plated stainless steel, PA 66, Polycarbonate.	
Lid Assembly	Anodised Aluminium Alloy, Zinc plated steel, Polythene, Polyester, Jointing compounds, Structural adhesives, Epoxy resin.	
Water Drain Assembly	Anodised Aluminium, Silicone sponge, Stainless Steel, Stainless Steel cadmium plated, polyefin (Heat shrink), Epoxy resin, Silicone Sealant, Polyester, Chromate conversion, Polycarbonate, Nitrile, LDPE, Epoxy paint, Vinyl	
Handle Assembly / Guide	Anodised aluminium alloy, PA 66, Stainless Steel	
Label	Metalized polyester, Anodised Aluminium alloy	
Screw	Cadmium Plated steel, Passivated stainless steel, Zinc Plated steel.	
Washer	Cadmium Plated steel, Passivated stainless steel, Zinc plated steel	

Filter Housing (Figure 1)		
Components	Material Type or Information (options that may be included)	Disposition Information
Nut	Cadmium Plated steel, Passivated stainless steel, Zinc plated steel.	
Gasket / Seal	Silicone sponge, silicone rubber	Dispose of in line with local and national legislation and guidelines for sealing materials.
Earth bonding point	Copper (wire), tin.	Disposition should reflect the materials of construction and any contaminants present as the result of use. Dispose of as a single unit in line with local and national legislation and guidelines.
Note: Obtain copies of Material Safety Data Sheets to allow decision on disposal instructions as appropriate for review in accordance with local Environmental, Health and Safety procedures.		

Materials of Construction and Disposition guidance for typical Filter Housing
Table A