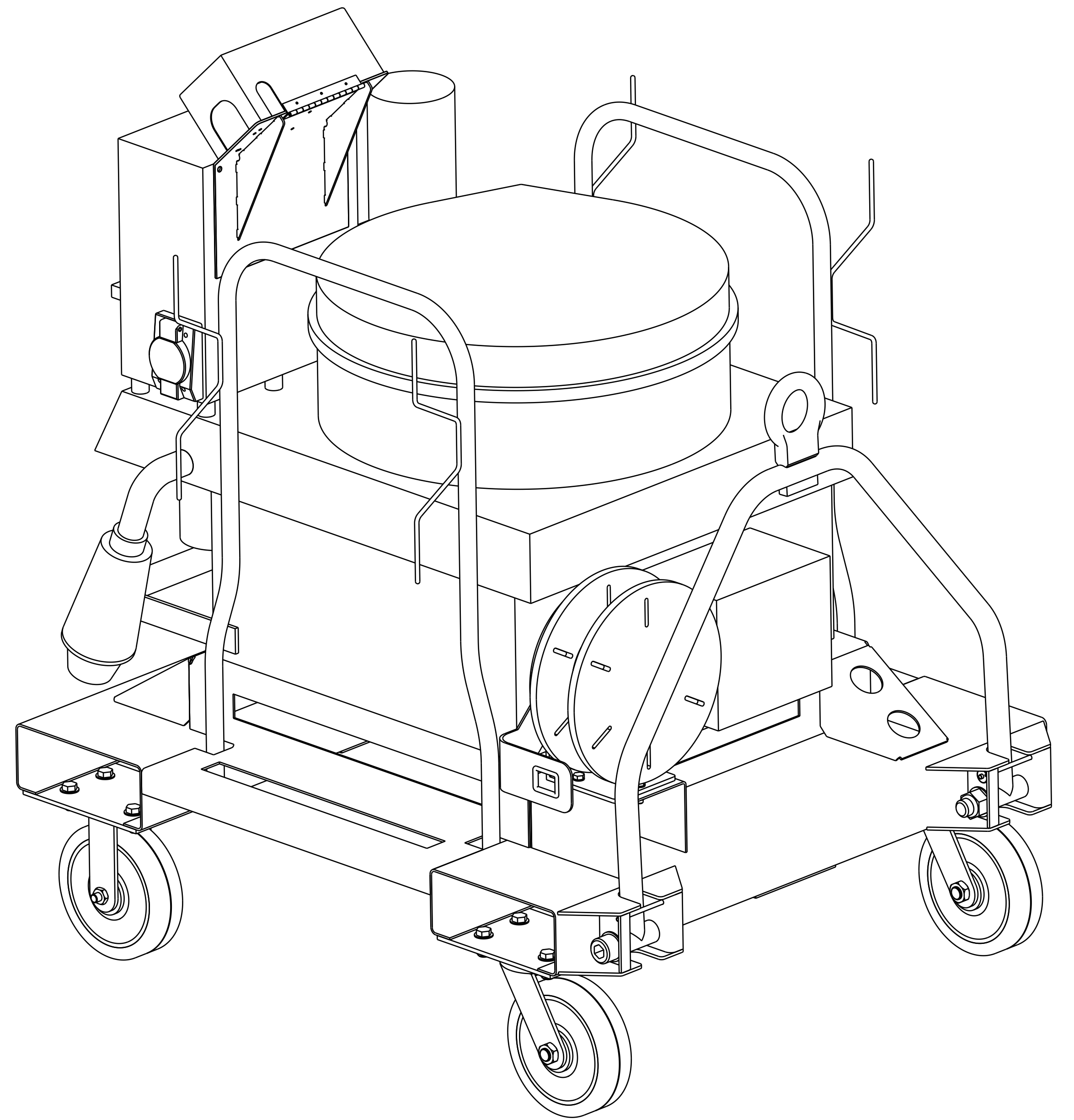
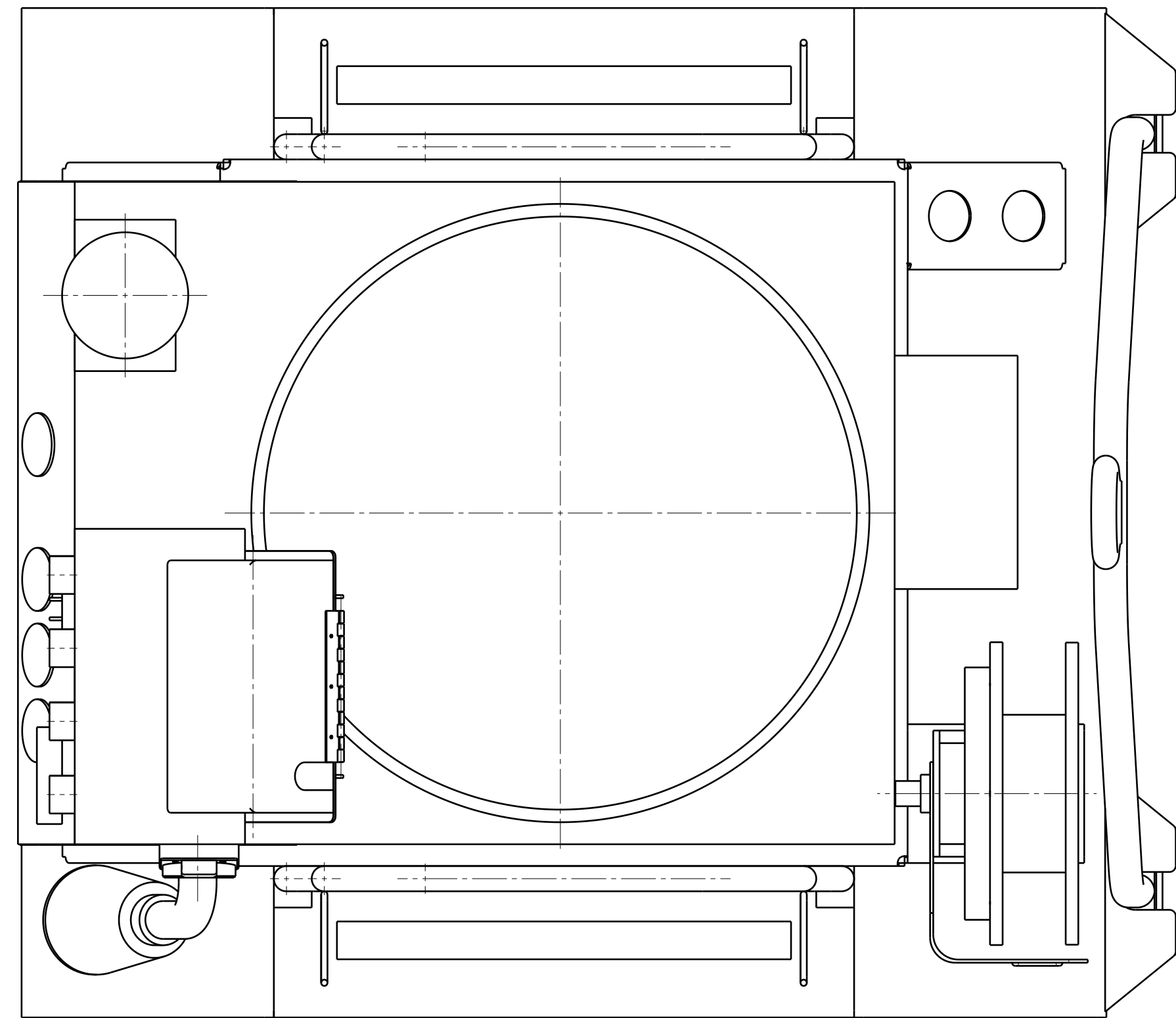


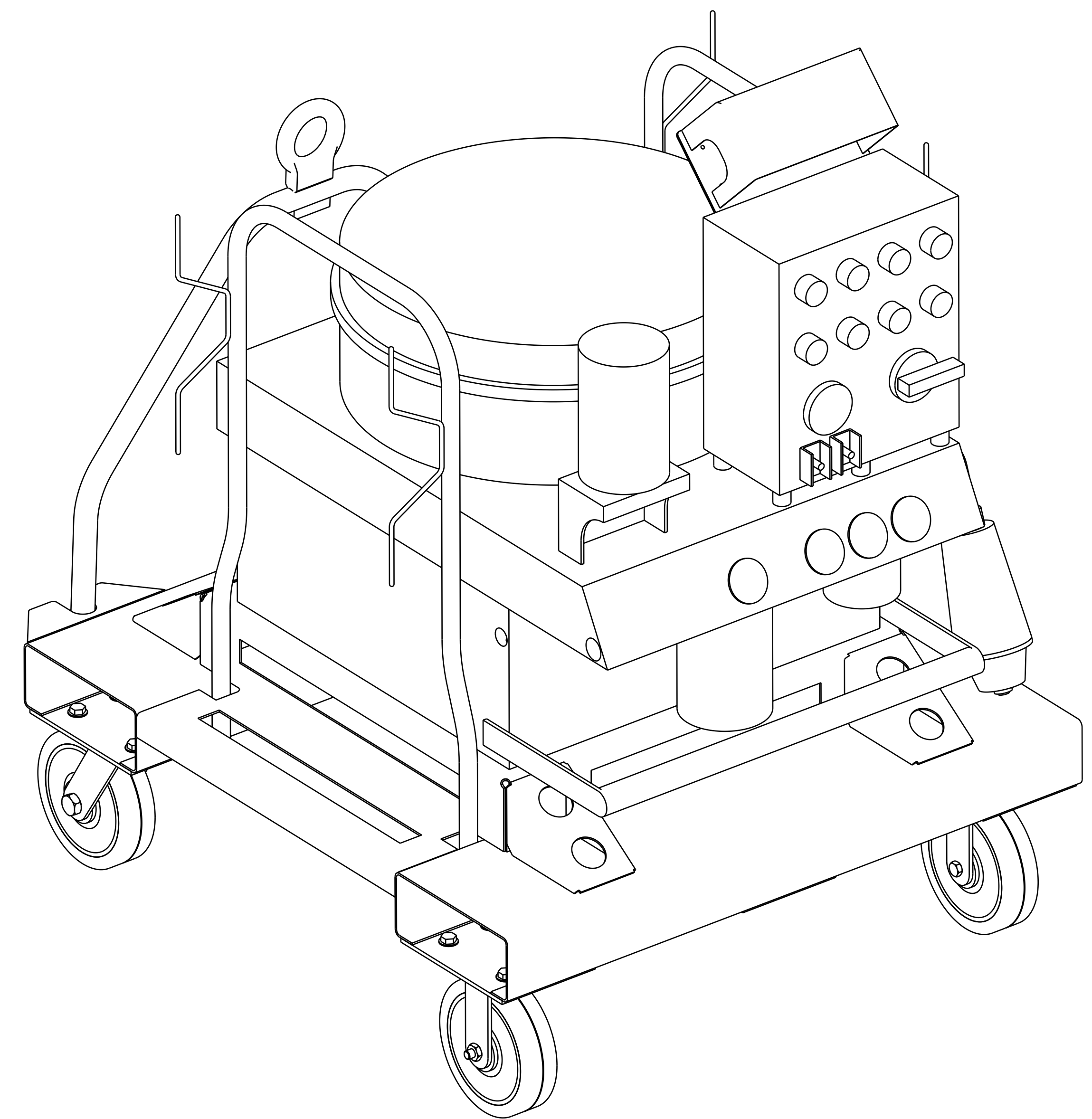
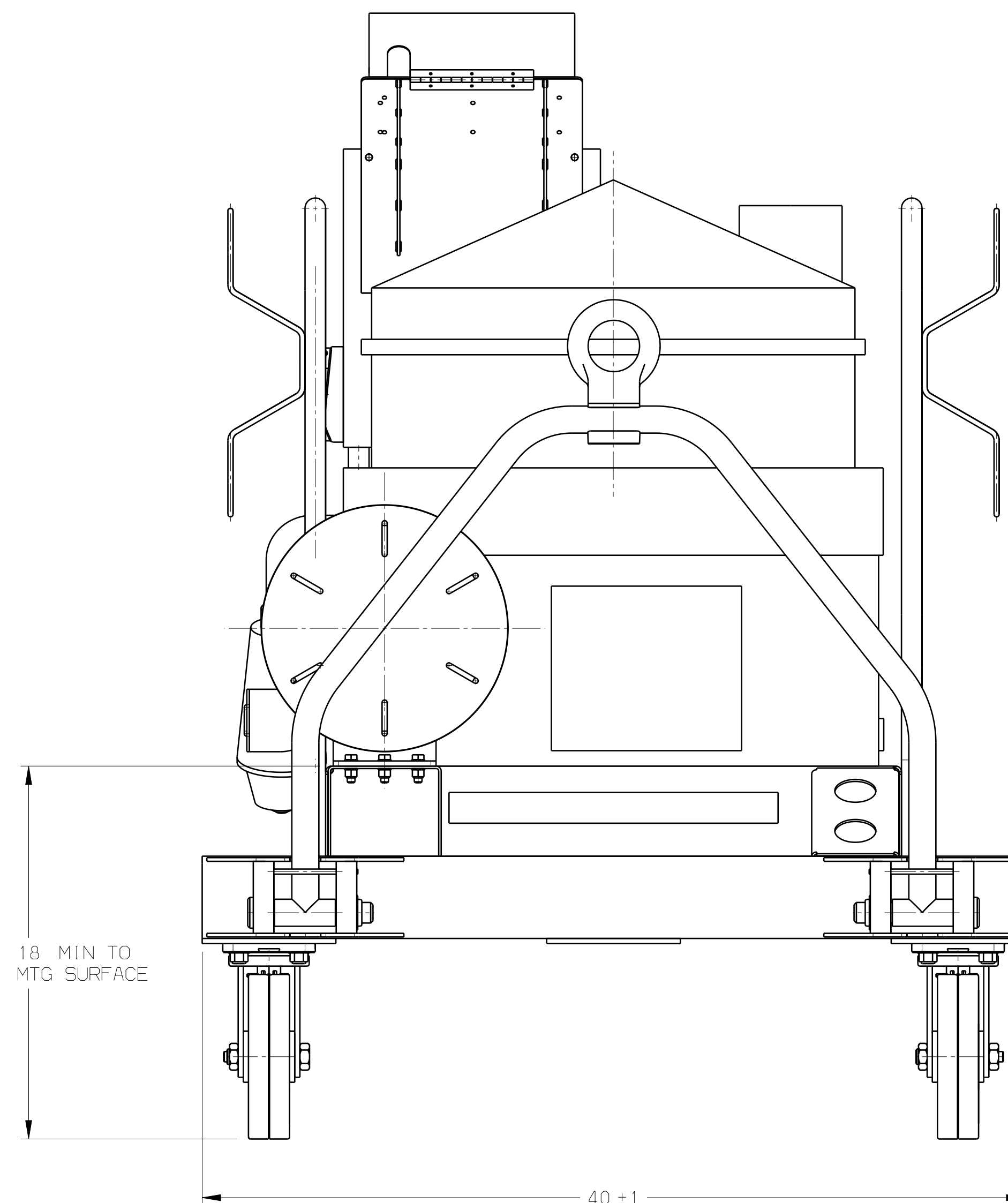
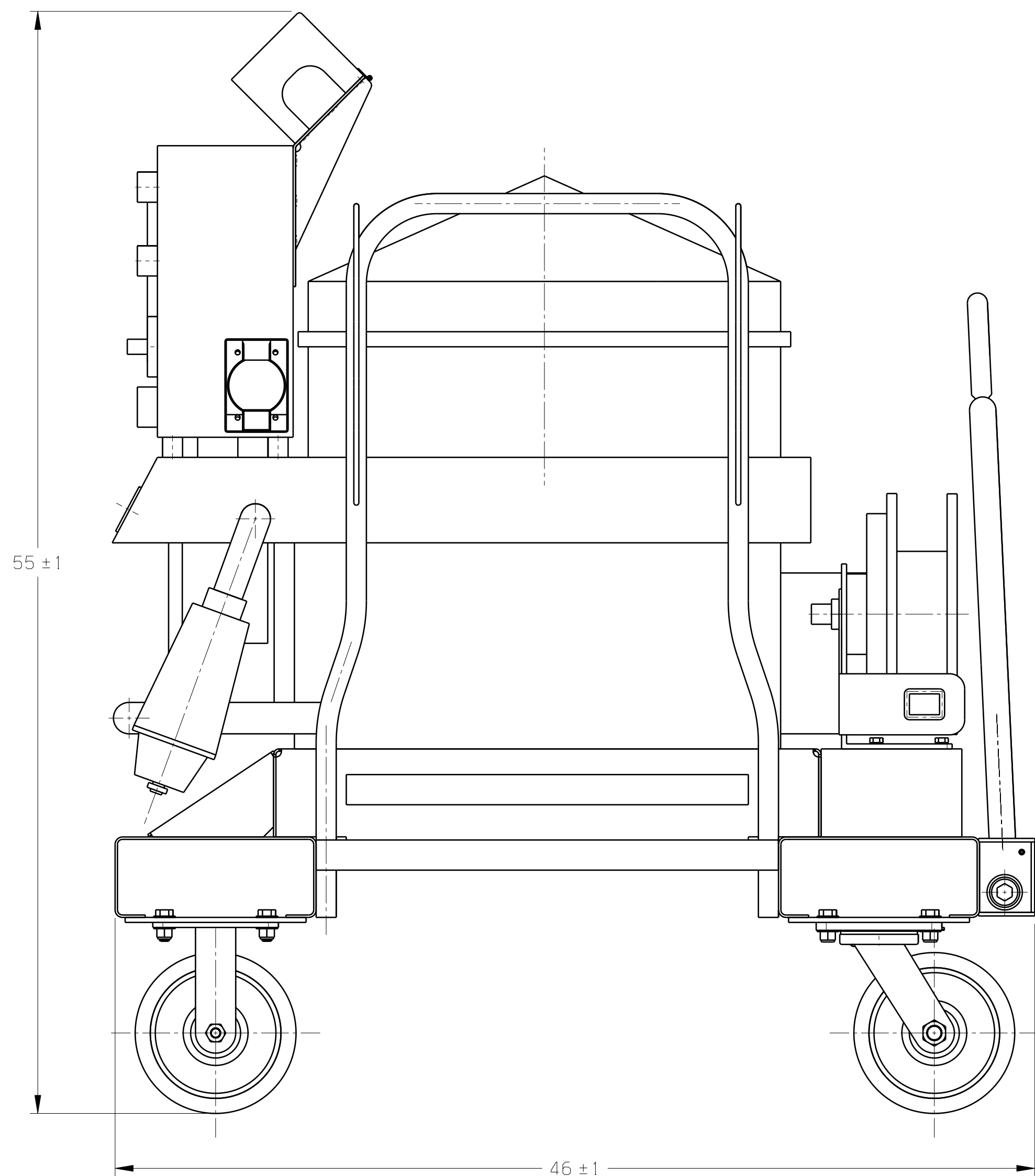
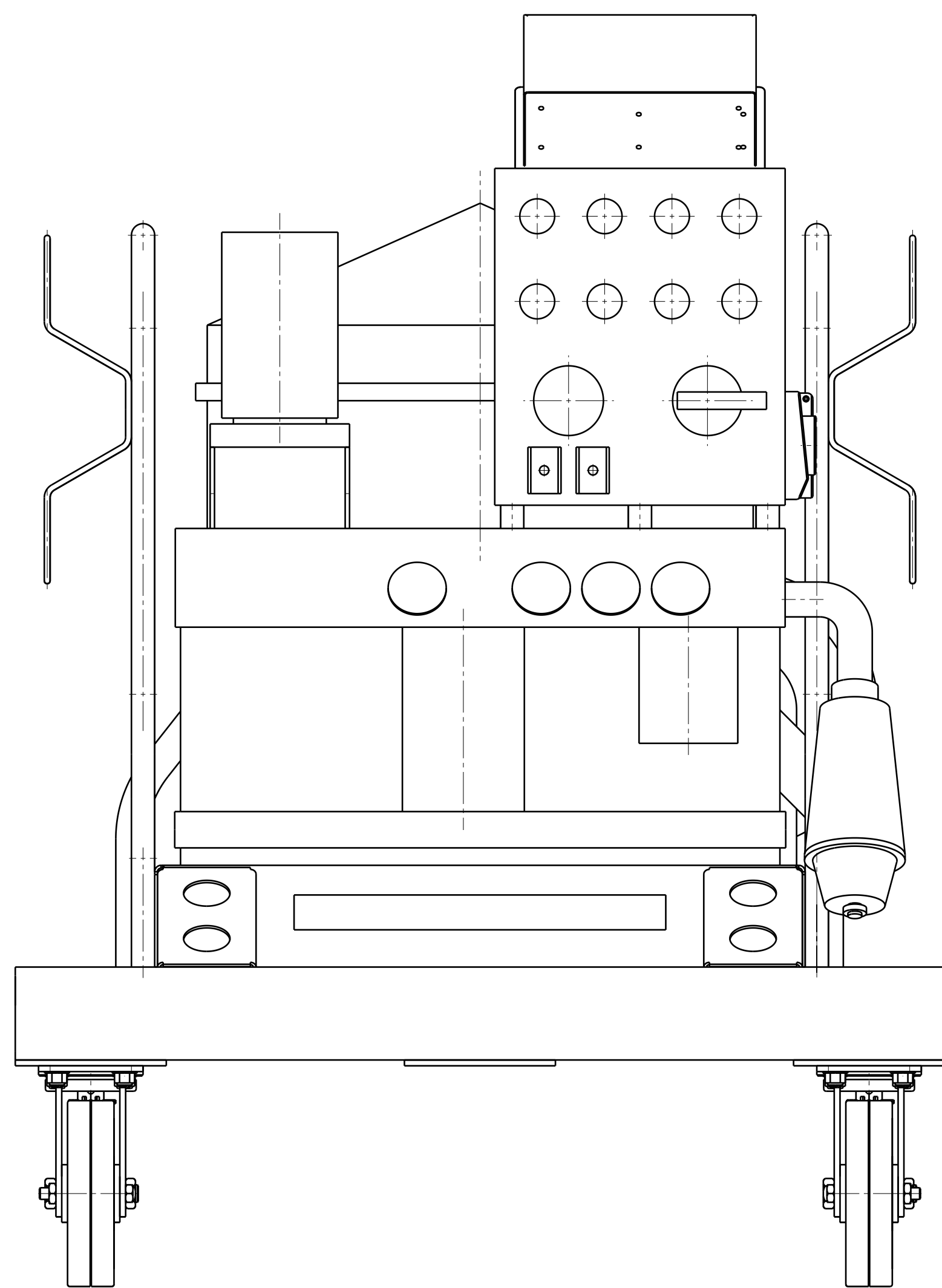
NOTES AND SPECIFICATIONS:

- PURIFIER SPECIFICATIONS:**
  - FLOW: 3 GPM (11L /MIN)
  - ENVELOPE: 46"L X 40"W X 55"H INCLUDING FRAME.
  - WEIGHT: APPROXIMATELY 550 LB DRY WEIGHT.
  - OPERATING VACUUM: 24±2 INCHES Hg
  - MAXIMUM VISCOSITY: 1300 SSU (260 cSt)
  - INLET PORT: 1" NPT
  - OUTLET PORT: 3/4" NPT
- ELECTRICAL REQUIREMENTS: 115V, 60 HZ, 1 PHASE.
- COALESCER EXHAUST PORT: 3/4" NPT CONNECTED TO MIST ELIMINATOR.
- WARNING: ADEQUATE VENTING PRECAUTIONS MUST BE TAKEN WHEN PURIFYING OIL IS CONTAMINATED WITH TOXIC FLUID.
- HIGH EFFICIENCY PARTICULATE FILTER: WHEN TESTED, SOLID PARTICULATE REMOVAL IS ACHIEVED USING A HIGHLY EFFICIENT 3 MICRON ABSOLUTE FILTER WITH A MINIMUM 99.5% GRAVIMETRIC EFFICIENCY WHEN TESTED PER MIL-PRF-81836 AND BETA RATIO > 2000 AT 3 MICRONS, WHEN TESTED PER ISO 4572
- UNIQUE OPERATING PRINCIPLE: REMOVES FREE AND DISSOLVED WATER; AS WELL AS FREE, ENTRAINED, AND DISSOLVED GASES; AND PARTICULATE CONTAMINATION.
- REFER TO PALL TECHNICAL MANUAL PN: PACTM13001 FOR OPERATING AND MAINTENANCE INSTRUCTION.
- CAUTION: VACUUM CHAMBER MUST BE HALF-FULL (VERIFY AT SIGHT GLASS TUBE) BEFORE START-UP (EVERY TIME).
- FLUID: USE ONLY MIL-PRF-83282 OR EQUIVALENT FLUID.

ZONE	ISS	DESCRIPTION	DATE	APPROVALS
PALL	A	REVISED PER ECD 416-13-007	7 MAR 2013	MODIFIED BY: SPRAGUE
		CHANGE CODE: F1	22 MAR 2013	DWG CHCK BY: MATTHEW
			22 MAR 2013	PROJ ENGR BY: SPRAGUE
				MFG ENGR:
				TECH APPR:
				ESN APPR:
			22 MAR 2013	ESN APPR: A. PATEL



ISOMETRIC VIEW



ISOMETRIC VIEW

THESE COMMODITIES, TECHNOLOGY OR SOFTWARE MAY ONLY BE EXPORTED FROM THE UNITED STATES IN ACCORDANCE WITH THE EXPORT ADMINISTRATION REGULATIONS. DIVERSION CONTRARY TO U.S. LAW IS PROHIBITED.

© 2012 PALL CORPORATION  
 This document may contain confidential technical data, including trade secrets proprietary to Pall Corporation. The document, design rights and all other disclosures in this document are the property of Pall Corporation. Unauthorized use, copying, distribution to third parties, manufacture, or reproduction in whole or in part is prohibited.  
**PALL CORPORATION**

UNLESS OTHERWISE SPECIFIED		THIRD ANGLE PROJECTION	DWG PER ASME Y14.5M-1994 OR BS 8888	APPROVALS		DATE	PALL Corporation	
DIMENSIONS ARE IN INCHES				DRAWN BY: M. SPRAGUE	16 NOV 2012	PALL AEROSPACE CORPORATION, NEW PORT RICHEY, FL	TITLE: ASSEMBLY PURIFIER	
TOLERANCES ARE:				DWG CHCK: B. WHITE	16 NOV 2012			
DECIMALS	ANGLES	PROJ ENGR: A. PATEL	16 NOV 2012	APPROVALS			SIZE: E	PAGE CODE: 18350
.X ± -	± DEG	MFG ENGR: K. EVERS	16 NOV 2012	TECH APPR: A. PATEL	16 NOV 2012		DWG NO: PE0109012H-W83	REV: A
.XX ± -		TECH APPR: A. PATEL	16 NOV 2012	ESN APPR: A. PATEL	16 NOV 2012		SCALE: 1/25	WEIGHT: SHEET 1 OF 1
.XXX ± -		CONTRACT NO:						
SURFACE FINISH: ✓								
DO NOT SCALE DRAWING								