



Pall Corporation

www.pall.com

Filtration and Separation Solutions

for the Chemicals Industry



Filtration. Separation. Solution.SM

Pall technologies...help make our customers' processes more reliable and their products better, safer, and in some cases even possible

Pall is a leader in the field of filtration, separation and purification. Our proprietary core materials are used to separate, remove, or selectively capture the most elusive contaminants from gases or liquids to help increase yields and improve product quality.

Pall has the unique ability to design, manufacture, install, and service integrated systems that cost-effectively treat process liquids and gases.



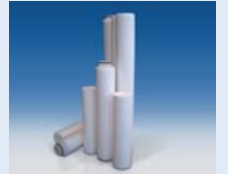
FILTER ELEMENTS



Disposable Filters

Typical Applications:
Particulate removal, product filtration, bag filter replacement

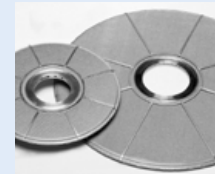
- Utlipreat® High Flow • Coreless
- Nexis® • Claris® • Marksman™
- Profile® • DFT Classic® • Poly-Fine®
- Duo-Fine®



Metallic Media Filters

Typical Applications:
Filtration of hot & aggressive fluids, polymer processing, steam/condensate

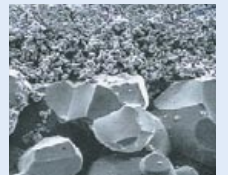
- Dynalloy® • Rigimesh® • PSS®
- PMF™ • PMM®



Ceramic Filters

Typical Applications:
Crossflow filtration, gas/solid separation, catalyst removal, hot gas filtration

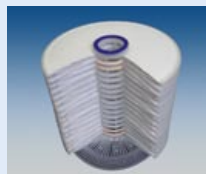
- Schumasiv™ • Carbo™ • Membralox®
- Aerolith® • Schumalith™ • Schumasorb™



Filter Modules

Typical Applications:
Fine filtration, depth filtration, gel removal, decolourisation

- SUPRAdisc™ • SUPRApak
- AKS modules



Other Filter Media

- SDT Reverse Osmosis membranes
- Spiral wound RO elements
- Last chance filters
- String wound cartridges
- Special bag filters • Capsules



FILTER HOUSINGS

Filters and Modules

Typical Materials:
Carbon steel, stainless steels, alloys, polymer and specialities

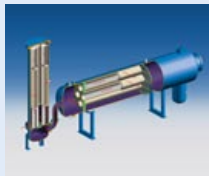
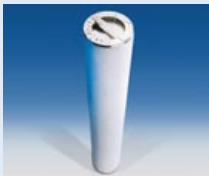
• Ultipleat® High Flow • VelaDisc



Coalescers

Typical Applications:
Liquid-liquid separation, liquid-gas separation

• PhaseSep® • SepraSol™ • AquaSep®
• Medallion™



Fluid types include:

- ▶ Bulk and fine chemical filtration
- ▶ Olefins and polyolefins
- ▶ Silicon products
- ▶ Chlor-alkali
- ▶ Hydrogen, nitrogen and ethylene production
- ▶ Polymer feedstock and melt filtration
- ▶ Biofuels

FILTER SYSTEMS

Crossflow (TFF) Membranes and Reverse Osmosis

Typical Applications:
Water/effluent treatment

• Membralox / Schumasiv
• Pall Aria™ MF / RO systems
• Pall Aria™ PAM 60 Containerised Water Treatment System



Backwash and Blowback Filters

Typical Applications:
Brine filtration, hot gas filtration systems

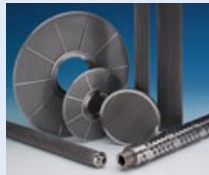
• AccuSep® • Dynalloy® • Rigimesh®
• PSS® • PMF® • PMM®



Continuous Polymer Filtration System

Typical Applications:
Polymer processing, polymer melt filtration, synthetic fibre/resin production, thin film

• CPF System® 100 Series
• CPF System® 200 Series

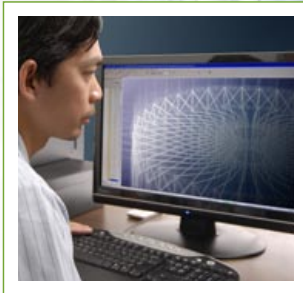


Benefits of using Pall filtration and separation solutions:

- ▶ Consistent fluid cleanliness quality
- ▶ Improved final product quality
- ▶ High flow rates with long filter element service life
- ▶ Reduced waste
- ▶ Reliable processes/equipment
- ▶ Increased yield from feedstocks
- ▶ Lower operating and maintenance costs
- ▶ Improved equipment availability

For more information visit:

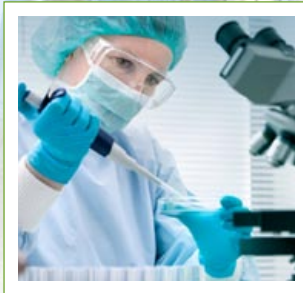
www.pall.com/fuelsandchemicals
or email us at kundenservice@pall.com



Research and Development

Working with equipment and component manufacturers in these markets, Pall custom designs products and purification systems that are fully integrated into chemical industry applications.

These products extend component service life, enhance safety and improve the operating reliability of all processing systems.



Scientific and Laboratory Services

A principal element in Pall's customer support operations is our Scientific and Laboratory Services (SLS) Department. Filtration problems arising in the field can be assessed and simulated in the laboratory. Close monitoring by Pall scientists can determine the engineered solution to your contamination and separation problems and advise accordingly.



Sales and Support

The sales and support team comprises a group of experienced specialists located in Europe, the Americas and across Asia. With distributors and representatives worldwide, we offer a comprehensive support network to customers around the globe.



Service

Pall is committed to strengthening its relationships with customers by providing timely service, high quality parts, and clear communications throughout the process. We have skilled service teams ready to take your call and provide on-site service as needed.



For more information visit:

www.pall.com/fuelsandchemicals
or email us at kundenservice@pall.com



Pall Corporation

Fuels and Chemicals

25 Harbor Park Drive
Port Washington, NY 11050

+1 516 484 3600 telephone
+1 888 873 7255 toll free US

Pall GmbH
Planiger Straße 137
D-55543 Bad Kreuznach
Germany

+49 (0)671-8822-0 telephone
kundenservice@pall.com

Filtration. Separation. Solution.SM




To see how Pall is helping enable a greener, safer and more sustainable future, visit www.pall.com/green.

Visit us on the web at www.pall.com

Pall Corporation has offices and plants throughout the world. For Pall representatives in your area, please go to www.pall.com/contact

Because of technological developments related to the products, systems, and/or services described herein, the data and procedures are subject to change without notice. Please consult your Pall representative or visit www.pall.com to verify that this information remains valid. New products in this document may be covered by one or more patent numbers. For a complete list of Pall's patents please visit www.pall.com/main/about-pall/patents.page.

© Copyright 2015, Pall Corporation. Pall, , Ultipleat, Nexis, Claris, Marksman, Profile, Poly-Fine, Duo-Fine, PhaseSep, AquaSep, SeptraSol, Dynalloy, Rigimesh, Schumasiv, Carbo, Membralox, Aerolith, Schumalith, Schumasorb, SUPRADisc, SUPRApak, Medallion and Pall Aria are trademarks of Pall Corporation. ® indicates a trademark registered in the USA. **BETTER LIVES. BETTER PLANET.** and **Filtration. Separation. Solution.SM** are service marks of Pall Corporation.