

## Pall Complements Your Existing Site Capability

A Pall service contract can save you money, optimize performance and your return on investment.

Contact Pall Systems Services  
866.475.0115  
SystemsServices@pall.com

## Regional Service Centers, Coast to Coast



Pall Corporation



Pall Corporation


### Systems Services

839 State Route 13  
Cortland, NY 13045

866.475.0115 toll free  
607.753.6041 phone  
607.756.1862 fax

Visit us on the Web at  
[www.pall.com](http://www.pall.com)

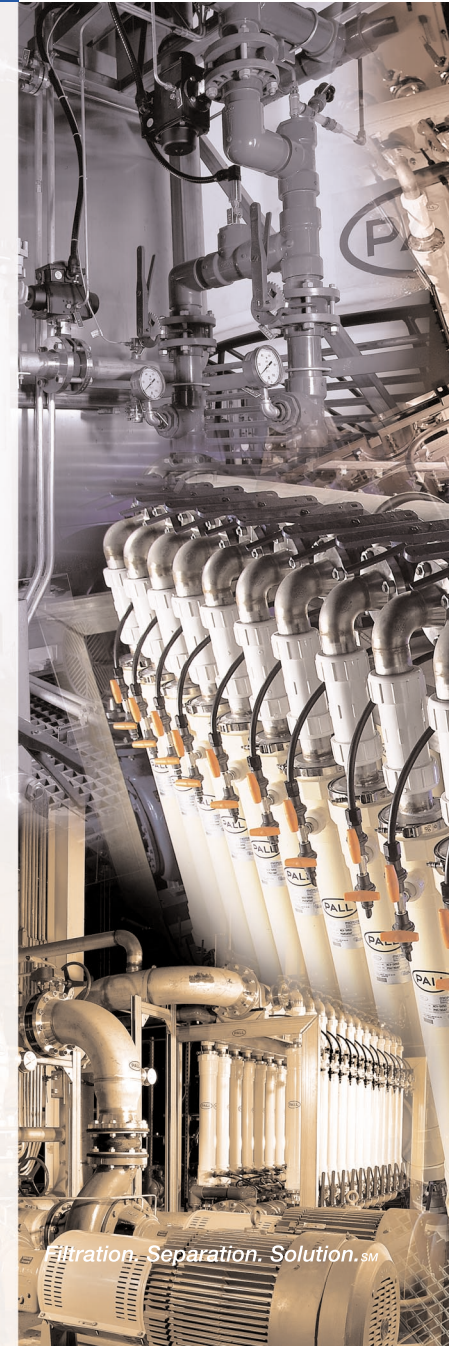
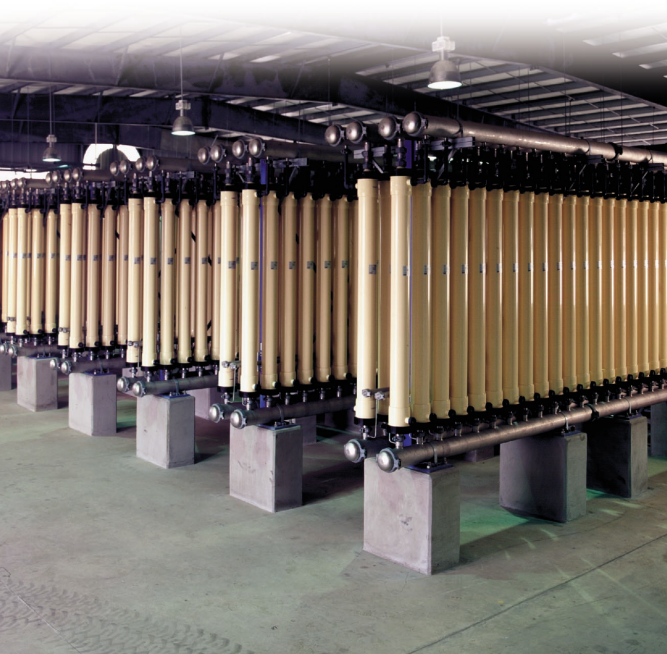
Pall Corporation has offices and plants throughout the world in locations including: Argentina, Australia, Austria, Belgium, Brazil, Canada, China, France, Germany, Hong Kong, India, Indonesia, Ireland, Italy, Japan, Korea, Malaysia, Mexico, the Netherlands, New Zealand, Norway, Poland, Puerto Rico, Russia, Singapore, South Africa, Spain, Sweden, Switzerland, Taiwan, Thailand, United Kingdom, United States, and Venezuela. Distributors are located in all major industrial areas of the world.

© Copyright 2003, Pall Corporation. Pall,  are trademarks of Pall Corporation. ® indicates a Pall trademark registered in the USA. *Filtration. Separation. Solution.<sup>sm</sup>* is a service mark of Pall Corporation. \*Select-A-FAX is a registered trademark of CyberData, Inc.

*Filtration. Separation. Solution.<sup>sm</sup>*

Reorder Code. SS1

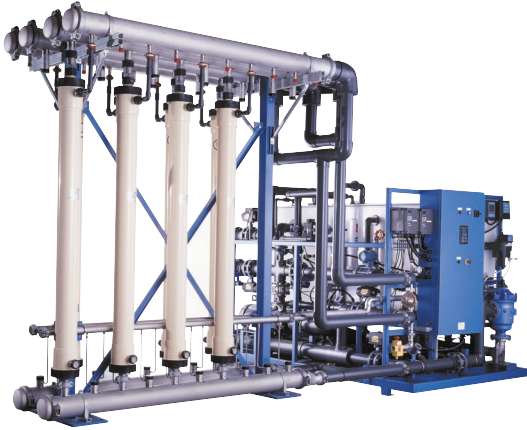
Systems Services



## Service Contracts Can Include:

- **System Inspections**

Visual and functional inspection of the system, controls, instrumentation and membranes



- **Start-up Services**

Commission installed systems, make it fully operational and optimize operation

- **Scheduled Maintenance**

CIP, Integrity Testing, preventive maintenance procedures performed on a prescheduled basis, to optimize component and system performance and reliability

- **Corrective Maintenance**

Troubleshoot, adjust, repair or replace components to resume proper system operation

## Site-Specific Service Contracts

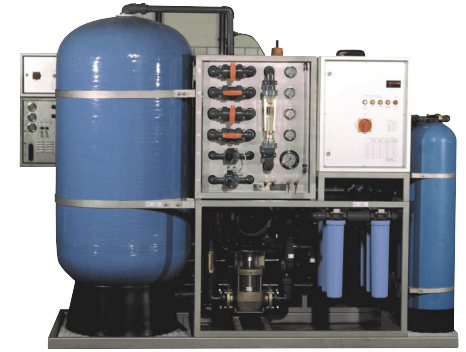
Provide the appropriate level of qualified service

Right for your system, operation and budget

As much or as little as you need

Flexibility to suit your needs and preferences

There when you need us



- **24/7 Service Support**

Access to Pall's **24/7** Systems Services Hotline, for around the clock technical support.

- **System Operation Services**

Operate, oversee or manage system operations; full-time or periodically

- **Remote Monitoring**

Monitoring, tracking/trending, reporting and/or adjusting the system remotely via modem

- **Training**

Operation, maintenance and management training, and refresher training

- **Spare Parts and Consumables**

Discounted pricing for specified spare parts, cleaners, filters and other consumables can be provided

- **Process Audits and Consulting**