



## TRI-STAR™ Series Disposable Cage System Housings

### Fast, Safe Disposal of Toxic and Dangerous Captured Contaminant

- One-Cage or Three-Cage Models Available
- Other Sizes Available Upon Request
- ASME U and UM Stamps Available
- Housings Constructed of 316L Stainless Steel
- Cage Design Eliminates Need For Extended Physical Contact With Hazardous Fluids
- Pre-Loaded Cages Substantially Reduce Labor and Downtime Costs
- Entire Cage Unit May Be Incinerated For Lower Disposal Costs
- Non-Metallic Polypropylene Cage Construction Minimizes Potential for Sparking During Handling
- Features a Proprietary Separator Plate for Extra Support of the Cage Assembly

### Housing Specifications

#### Maximum Operating Pressure:

Stainless Steel: 150 psig (10.3 bar) @ 200°F (93°C)

*NOTE: Maximum operating pressure ratings are vessel ratings only. Safe operating temperature and pressure will depend on filter cartridge and gasket/O-ring used. For inquiries on compatibility, contact the factory or your Pall distributor.*

#### Construction:

Non-Code: 1 Cage only

Code: ASME U or UM stamp - 1 or 3 Cage

#### Connections:

Inlet/Outlet: 3" – 6" Flange

Vent: 1" NPT

Drain: 1½" NPT

Gauge (2): ¼" NPT  
(Upstream/Downstream)

**Shell O-rings:** Buna N (standard), Silicone Elastomer, Neoprene, Ethylene Propylene, Viton<sup>1</sup> A

### Disposable Cage Specifications

Tri-Star Disposable Cage Assemblies are available for use in Tri-Star Housings. Cages can be fitted with most Pall filter cartridges produced in Timonium, MD and an O-ring sealing option is available. Twenty, thirty or forty-inch cages are available. See Tri-Star Disposable Cage Assembly data sheet for complete details.



Code Housing Shown

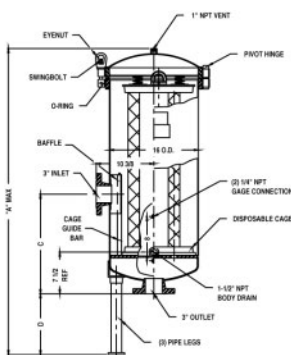
<sup>1</sup> Registered trademark of DuPont Dow.

## Dimensional Data (nominal)

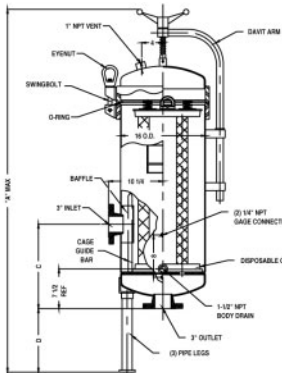
Model	Number of Cages	Cage Height (inches)	Code	Liquid Flow Rate² (gpm)	Dimensions (inches)					Dry Weight (pounds)
					A (height)	B (shell OD)	C	D	Inlet/Outlet	
30TSO2C	1	20 (50.8 cm)	No	150 (568 lpm)	49 (124.5 cm)	16 (40.6 cm)	16 (40.6 cm)	12.5 (31.8 cm)	3 (7.6 cm)	225 (102 kg)
45TSO3C	1	30 (76.2 cm)	No	225 (852 lpm)	59 (150 cm)	16 (40.6 cm)	16 (40.6 cm)	12.5 (31.8 cm)	3 (7.6 cm)	240 (109 kg)
60TSO4C	1	40 (102 cm)	No	300 (1135 lpm)	69 (175.3 cm)	16 (40.6 cm)	16 (40.6 cm)	12.5 (31.8 cm)	3 (7.6 cm)	225 (116 kg)
30TSO2C	1	20 (50.8 cm)	Yes	150 (568 lpm)	61 (155 cm)	16 (40.6 cm)	16 (40.6 cm)	12.5 (31.8 cm)	3 (7.6 cm)	500 (227 kg)
45TSO3C	1	30 (76.2 cm)	Yes	225 (852 lpm)	71 (180.3 cm)	16 (40.6 cm)	16 (40.6 cm)	12.5 (31.8 cm)	3 (7.6 cm)	575 (261 kg)
60TSO4C	1	40 (102 cm)	Yes	300 (1135 lpm)	81 (205.7 cm)	16 (40.6 cm)	16 (40.6 cm)	12.5 (31.8 cm)	3 (7.6 cm)	650 (295 kg)
135TSO3C	3	30 (76.2 cm)	Yes	675 (2555 lpm)	93 (236 cm)	30 (76.2 cm)	21 (53.3 cm)	20.25 (51.4 cm)	6 (15.2 cm)	1190 (540 kg)
180TSO4C	3	40 (102 cm)	Yes	900 (3407 lpm)	103 (261.6 cm)	30 (76.2 cm)	21 (53.3 cm)	20.25 (51.4 cm)	6 (15.2 cm)	1265 (574 kg)

<sup>2</sup> Flow rates listed are for depth cartridges. Consult factory for more specific information.

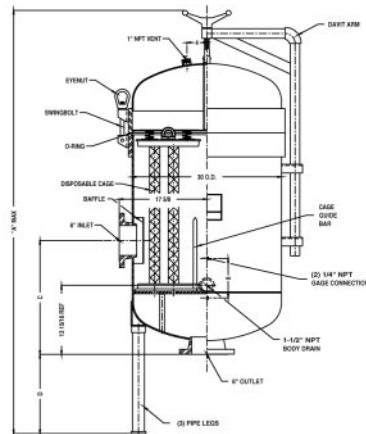
Side View (1 Cage - Non-Code Housing)



Side View (1 Cage - Code Housing)



Side View (3 Cage - Code Housing)



## Part Numbers/Ordering Information

■ TSO ● C-316L – ◆ ▼ ❖ – ▮ ▯ (e.g. 44TSO3C-316L-3FD-C150U)

Code	No. of 10" Equivalents <sup>3</sup>
30	30
45	45
60	60
135	135
180	180

<sup>3</sup> 7-around cage housings also available. Please consult Technical Services.

Code ●	Cage Height (nominal)
2	20"
3	30"
4	40"

Code	Davit Assembly
Blank	For Non-Code Housing
D	For Code Housing

Code ◆	Inlet/Outlet Connection Sizes
3	3"
4	4"
5	5"
6	6"

Code	ASME Stamp Designation
U	U Stamp
UM	UM Stamp

Code	Connection Styles
Blank	NPT
F	Flange

Code	Code Construction
Blank	Non-Code Construction (available for 1 cage model only)
C150	Code Construction



# Pall Corporation

2200 Northern Boulevard  
East Hills, New York 11548-1289

1.800.FILTERS toll free  
516.484.5400 phone  
516.484.0364 fax  
information@pall.com e-mail

Visit us on the Web at [www.pall.com](http://www.pall.com)

**Pall Corporation has offices and plants throughout the world in locations including:** Argentina, Australia, Austria, Belgium, Brazil, Canada, China, France, Germany, Hong Kong, India, Indonesia, Ireland, Italy, Japan, Korea, Malaysia, Mexico, the Netherlands, New Zealand, Norway, Poland, Puerto Rico, Russia, Singapore, South Africa, Spain, Sweden, Switzerland, Taiwan, Thailand, United Kingdom, United States, and Venezuela. Distributors are located in all major industrial areas of the world.