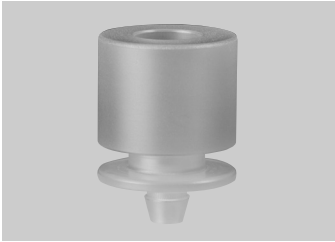




Adapter for Use with Sentino™ Magnetic Filter Funnel and Sentino Microbiology Pump



- Durable polyphenylsulfone construction for repeated use.
- Designed for use with the Sentino magnetic filter funnel and Sentino pump for water quality testing.

Ordering Information

Part Number	Description	Pkg
4283	Adapter, polyphenylsulfone	1/pkg

Specifications

Materials of Construction

Adapter: Polyphenylsulfone

Dimensions

Height: 2.9 cm (1.2 in.)

Diameter: 2.1 cm (0.8 in.)

Connections

Inlet accepts stem of the Sentino magnetic filter funnel; outlet hosebarb accepts 3/16 in. ID tubing

Sterilization

Provided non-sterile, Autoclavable if desired at 121-123 °C (250-253 °F) at 1.0 bar (100 kPa, 15 psi) for 15-20 minutes.

Note: Autoclaving adapter with drive tubing attached may reduce the service life of the tubing.

Accessories

Part Number	Description	Pkg
4285	Drive tubing for Sentino pump; thermoplastic elastomer, 3/16 in. ID x 5/16 in. OD, 2 ft length	10/pkg

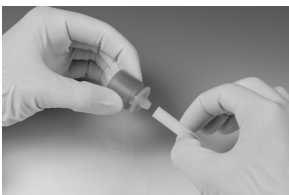
Instructions for Use

Loading the Fluid Path

1. Press tubing onto hose barb of adapter.
2. With the Sentino pump positioned on benchtop, open pump loading door fully.
3. Slide adapter into the guide on the pump housing until it is firmly seated.
4. Tuck the pump drive tubing into the slot in the pump head and position the tube into the guide slot in the base.
5. Remove tubing slack by pulling the tubing against the rollers as you close the pump loading door to a snap closed position.

Note: If pump head fails to rotate when turned on, then turn off pump, open pump head door and repeat step 5.

Note: For optimal performance, trim and discard the small portion of tubing in contact with the rollers once a day or when wear is evident and affecting flow performance.



Sanitizing the Fluid Path

1. Turn pump on and run 70% IPA through the adapter and fluid path for 5 seconds.
2. Pump residual IPA through the tube.
3. Open the pump head loading door to relieve the pinch of the rollers on the drive tube when pump is not in use.

WARNING

Employment of the products in applications not specified, or failure to follow all instructions contained in this product information insert, may result in improper functioning of the product, personal injury, or damage to property or the product. See Statement of Warranty in our most recent catalog.

ATTENTION

L'utilisation de nos produits dans des applications pour lesquelles ils ne sont pas spécifiés ou le non-respect du mode d'emploi qui figure sur ce document, peut entraîner un dysfonctionnement du produit, endommager le produit ou d'autres biens matériels ou représenter un risque pour l'utilisateur. Se référer à la clause de garantie de notre catalogue le plus récent.

ACHTUNG

Der Einsatz dieses Produktes in Anwendungen für die es nicht spezifiziert ist, oder das Nichtbeachten einiger, in dieser Bedienungsanleitung gegebenen Hinweise kann zu einem schlechteren Ergebnis, oder Zerstörung des Produktes oder anderer Dinge oder gar zu Verletzungen führen. Beachten Sie auch unsere Garantiebedingungen im aktuellen Katalog.

ADVERTENCIA

El uso de este producto en aplicaciones no especificadas o el no considerar las instrucciones indicadas en la hoja de información del producto puede ocasionar un mal funcionamiento del producto, daños en las instalaciones o en el producto y riesgo para el personal del laboratorio. Consulte el apartado de Garantía en nuestro último catálogo.

ATTENZIONE

L'impiego dei prodotti in applicazioni non specificate, o il mancato rispetto di tutte le istruzioni contenute nel presente bollettino tecnico, potrebbero portare ad un utilizzo improprio del prodotto, ferire gli operatori, o danneggiare le caratteristiche del prodotto stesso. Consultare la dichiarazione di garanzia pubblicata nel nostro più recente catalogo.

警告

当製品情報に記載されていないアプリケーションにおいて製品を使用した場合、あるいは当製品情報に記載されている使用方法に従わない場合は、製品の機能上の不具合、人体への危害、あるいはお客様の財産や製品への損害をまねく恐れがあります。必ず、最新のカatalogに記載してある保証約款をご覧ください。

Pall Life Sciences
600 South Wagner Road
Ann Arbor, MI 48103-9019 USA

1.800.521.1520 USA and Canada
(+800.PALL.LIFE Outside USA and Canada
1.734.665.0651 phone
1.734.913.6114 fax

Visit us on the Web at www.pall.com/lab
E-mail us at LabSupport@pall.com

Australia, Cheltenham, VIC, 03 9584 8100
Austria, Wien, 00 1 49 192 0
Brazil, São Paulo, SP, +55 11 5501 6000
Canada, Ontario, 905-542-0330
Canada, Québec, 514-332-7255
China, P.R., Beijing, 86-10-6780 2288
France, St. Germain-en-Laye, 01 30 61 32 32
Germany, Dreieich, 06103-307 333
India, Mumbai, 91 (0) 22 67995555
Italy, Buccinasco, +3902488870.1
Japan, Tokyo, 03-6901-5800
Korea, Seoul, 82-2-560-8711
Malaysia, Selangor, +60 3 5569 4892
Poland, Warszawa, 22 510 2100
Russia, Moscow, 5 01 787 76 14
Singapore, 65 6 389-6500
South Africa, Johannesburg, +27-11-2662300
Spain, Madrid, 91-657-9876
Sweden, Lund, (0)46 158400
Switzerland, Basel, 061-638 39 00
Switzerland, Fribourg, +41 (0)26 350 53 00
Taiwan, Taipei, 886 2 2545 5991
Thailand, Bangkok, 66 2937 1055
United Kingdom, Farnlington, 02392 302600