

New: Retrofits for Peco DynaCeptor LG Coalescers

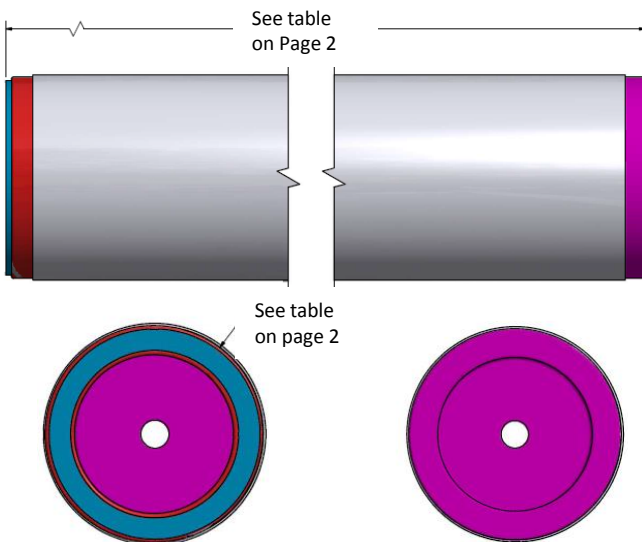
Introducing Pall's 'direct replacement' coalescer technology for users of Peco DynaCeptor

Pall's new retrofit products allow users of other manufacturers' elements to benefit from Pall technology without the need to replace the existing housing/vessel. Pall retrofit products are direct replacements for existing elements, offering the performance and value you have come to expect from Pall.

Advantages of Pall Technology

Pall's filter media and element designs bring together industry leading technologies and advanced manufacturing processes to deliver unsurpassed performance and value in each and every element.

Nominal Element Dimensions



(Depicted in color for clarity of components only)

Pall Retrofit p/n: See table on page 2

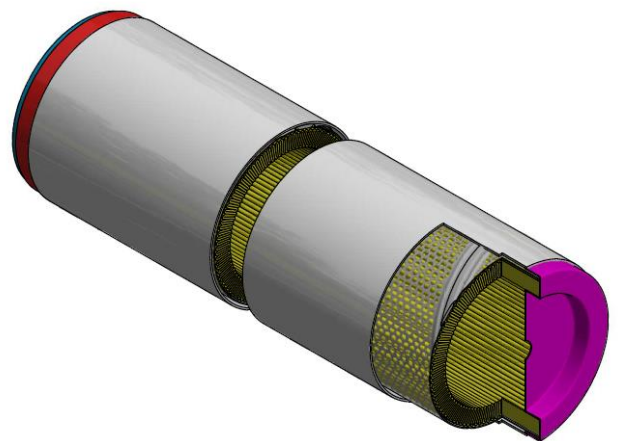
Replaces: Peco p/n: NGGL and PZC Series

Specifications:

- Pleated Medium: Glass Fiber
- Large surface area for long service life
- 99.999% removal of 0.3 micron liquid particles
- In-to-Out flow direction
- SOE and DOE variants
- Hardware: 304 stainless steel
- Cage: 304 stainless steel
- Flat Gasket: Fluorocarbon
- Max Operating Differential Pressure: 15 psid (1.0 bar)

Global Presence – Local Support

Pall is a global company with offices in Asia, Americas, Europe, and the Middle East. This global presence gives us the ability to provide local commercial or technical support whenever or wherever there is a customer need.



Pall-Fit replacements for Peco DynaCeptor coalescers

Peco DynaCeptor P/N	Description	Pall-Fit Replacement P/N	Inside Diameter	Outside Diameter	Nominal Length
NGGC-312	SOE	PRLG019PG412S0003V	3.23"	4.44"	12"
NGGC-324	SOE	PRLG019PG424S0003V	3.23"	4.44"	24"
NGGC-336	SOE	PRLG019PG436S0003V	3.23"	4.44"	36"
PZC-312	SOE (metal ends)	PRLG019PG412S0003V	3.23"	4.44"	12"
PZC-312	DOE (Integral or metal ends)	PRLG019PG412D0003V	3.23"	4.44"	12"
PZC-318	SOE (metal ends)	PRLG019PG418S0003V	3.23"	4.44"	18"
PZC-318	DOE (Integral or metal ends)	PRLG019PG418D0003V	3.23"	4.44"	18"
PZC-324	SOE (metal ends)	PRLG019PG424S0003V	3.23"	4.44"	24"
PZC-324	DOE (Integral or metal ends)	PRLG019PG424D0003V	3.23"	4.44"	24"
PZC-336	SOE (metal ends)	PRLG019PG436S0003V	3.23"	4.44"	36"
PZC-336	DOE (Integral or metal ends)	PRLG019PG436D0003V	3.23"	4.44"	36"