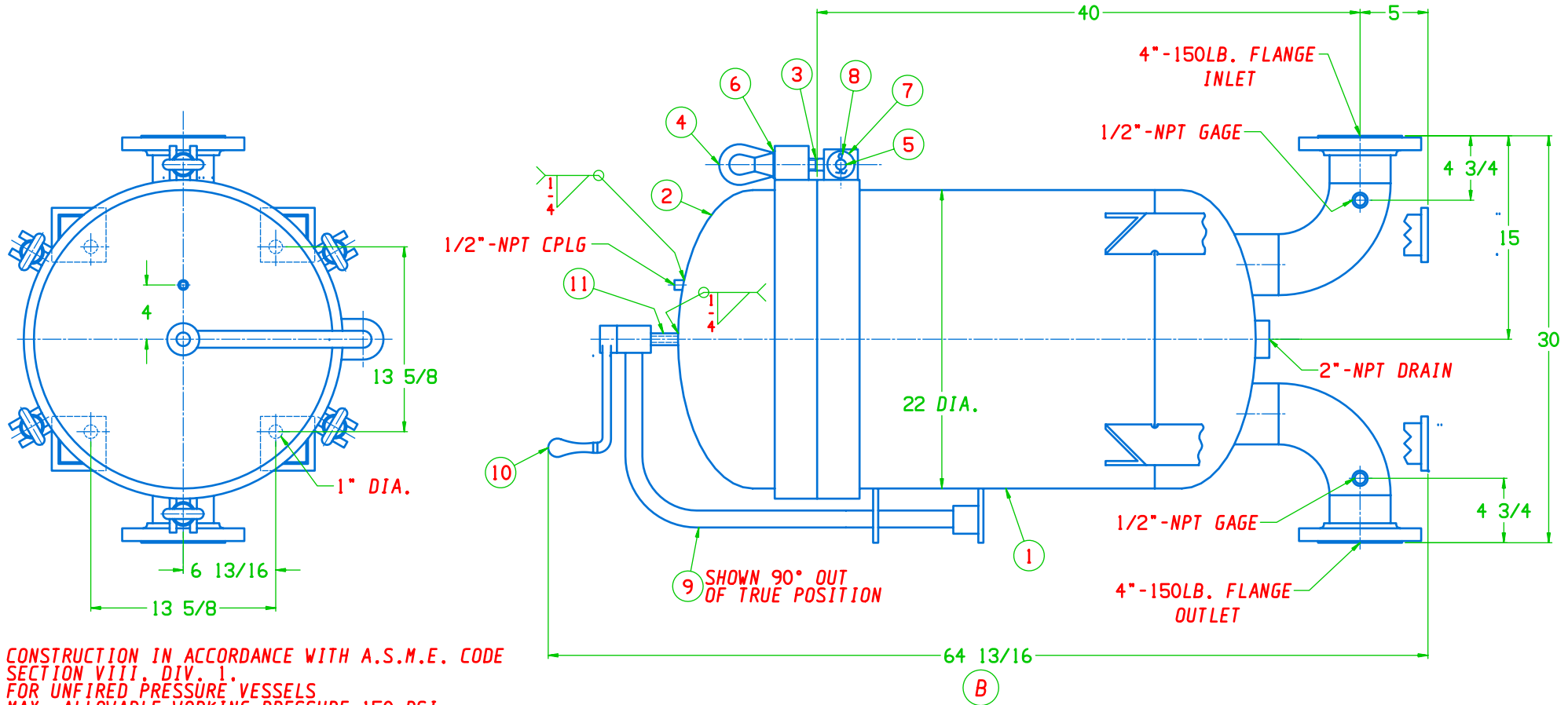


ITEM	QTY	DESCRIPTION	MATERIAL	PART NO.	ITEM	QTY	DESCRIPTION	MATERIAL	PART NO.
1	1	HOUSING WELD ASS'Y	316 S.S.	428708	8	6	COTTER PIN	S.S.	EHCP03X160B
2	1	LID ASS'Y	316 S.S.	PCA430000C	9	1	LIFTING ARM	C.S. NI. PLT.	LDR282041A0E
3	6	EYE BOLT (7/8-9 UNC)	SA-193-B7 NI. PLATED	PHB25121A09E	10	1	LIFT. ARM CRANK	MALL. IRON	LDC26004A0ME
4	6	EYE NUT (7/8-9 UNC)	SA-194-1 NI. PLATED	PHE25024A10E	11	1	LID LIFT SCREW (7/8-9 UNC)	P-NO. 8	PDS28031A0B
5	6	CLEVIS PIN (3/4 DIA.)	SA-193-B7 NI. PLATED	PHP25120A09E	12	4	BASKET (NOT SHOWN)	316 S.S.	EBA27025C
6	6	WASHER (HARDENED) 7/8 USS	C.S. ZN. PLT.	EHWU14HOAZ	13	1	GASKET (NOT SHOWN)	BUNA-N(STD.)	EGL30249B
7	6	WASHER	S.S.	EHWS12SOA					

NOTE:
ALL NPT COUPLINGS PER ANSI SPEC. B16.11



CONSTRUCTION IN ACCORDANCE WITH A.S.M.E. CODE
SECTION VIII, DIV. 1
FOR UNFIRED PRESSURE VESSELS
MAX. ALLOWABLE WORKING PRESSURE 150 PSI
HYDROSTATIC TEST PRESSURE 195 PSI
MAX. DESIGN TEMP. 250° F
MIN. DESIGN TEMP. -20° F
CORROSION ALLOWANCE - NONE
RADIOGRAPHY - NONE
IMPACT TEST - NONE PER UCS-66
PWHT - NONE PER UCS-56
NOZZLE INSIDE RADII PER UW-16

STOCK VESSEL

5861

				FSI	FILTER SPECIALISTS INC. MICHIGAN CITY, IND. 46360	DATE 7-30-03 APP'D RLH SCALE 1-6	DWN BY RLH SCALE 1-6
C	REVISED LIFT ARM NO.	JMD	6/13/06	FILTER ASS'Y FSPN-800 #4- 4" FLG PART NO. 428709		MATERIAL 316 S.S. DRAWING NO. 1901423	
B	VAS 64 11/16	RLH	1-26-06				
A	UPDATED BOM	JSM	3/7/05				
CHG	REVISION	BY	DATE				