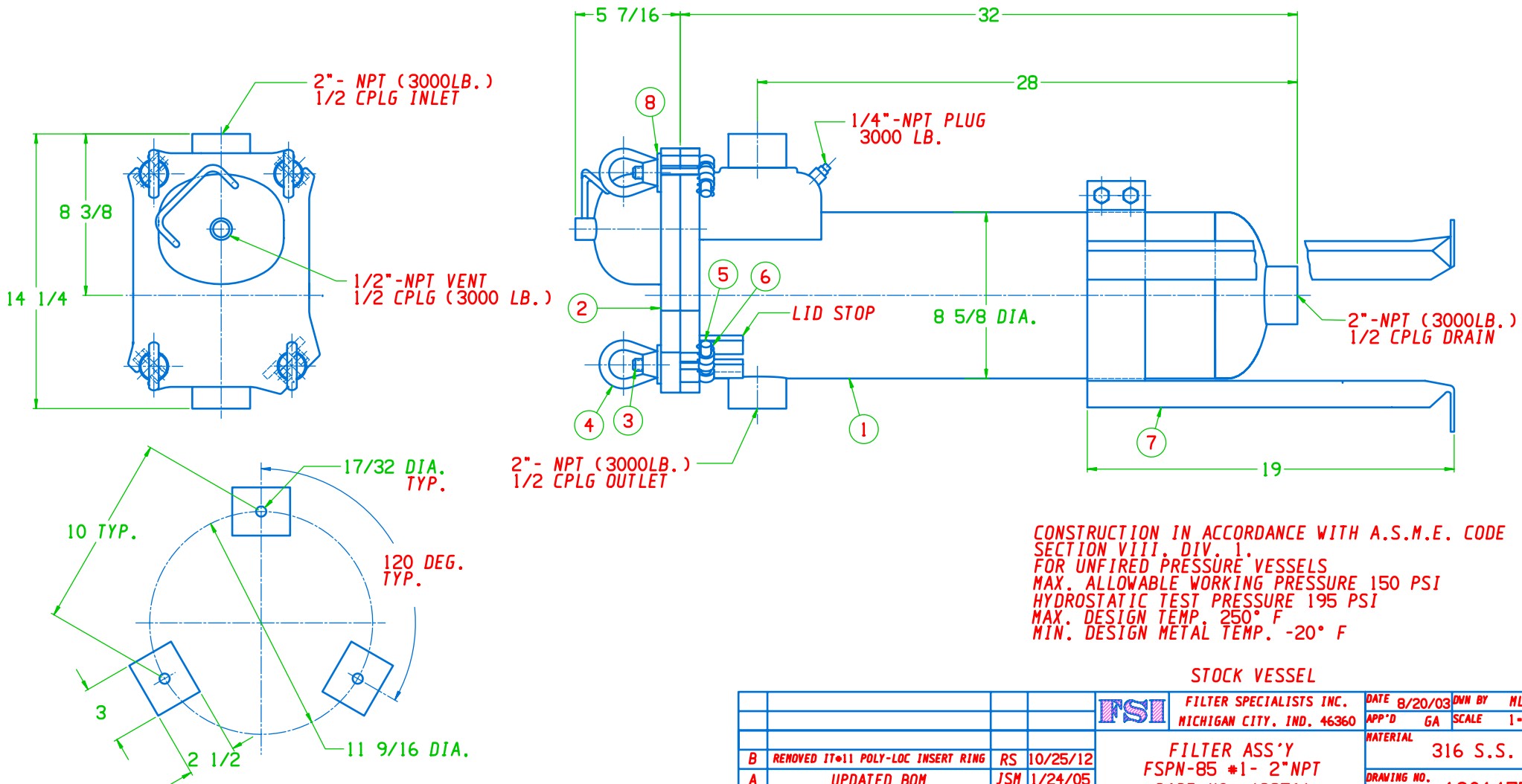


ITEM	QTY.	DESCRIPTION	MATERIAL	PART NO.	ITEM	QTY.	DESCRIPTION	MATERIAL	PART NO.
1	1	HOUSING WELD ASS'Y	316 S.S.	428760	6	4	COTTER PIN	S.S.	EHCP03X160B
2	1	LID ASS'Y (1"TK)	316 S.S.	PCA408662C	7	1	LEG ASSY	S.S.	LLA28060B
3	4	EYE BOLT (5/8-11 UNC X 3 1/2" L)	SA-193-B8	PHB25146A24	8	4	WASHER (HARDENED) 5/8 USS	C.S. ZN.PLT.	EHWU10HOAZ
4	4	EYE NUT (5/8-11 UNC)	SA-194-1 NI.PLATE	PHE25006A10E	9	1	BASKET (NOT SHOWN)	316 S.S.	EBA27025C
5	4	CLEVIS PIN (1/2 DIA. X 2 9/16" L)	SA-193-B8	PHP25144A24	10	1	GASKET (NOT SHOWN)	BUNA-N (STD)	EGL30007B

NOTE :
WHEN A SOLID TEFLON OR TEFLON-ENCAPSULATED
GASKET IS USED, ALL METAL SURFACES IN CONTACT
WITH GASKET ARE TO HAVE A 16-32 RMS FINISH.



STOCK VESSEL

				FSI	FILTER SPECIALISTS INC.	DATE 8/20/03	DWN BY MLH
					MICHIGAN CITY, IND. 46360	APP'D GA	SCALE 1-4
						MATERIAL	316 S.S.
B	REMOVED IT-11 POLY-LOC INSERT RING	RS	10/25/12		FILTER ASS'Y		
A	UPDATED BOM	JSM	1/24/05		FSPN-85 #1- 2"NPT		
CHG	REVISION	BY	DATE		PART NO. 428761	DRAWING NO.	1901475