



## MEGA+ 12 Series High Purity Filter Housings

### Electropolished Stainless Steel, Accepts 12-10" (25.4 cm), 20" (50.8 cm), 30" (76.2 cm), or 40" (102 cm) Cartridges

- High flow liquid service
- Inlet and outlet connections aligned in T-style for ease of installation
- Electropolished 316L stainless steel materials of construction for maximum corrosion resistance
- 150 psig (10.3 bar) maximum operating pressure permits use in a wide range of applications
- 3" (7.6 cm), 150 b. ANSI raised face flange
- Universal seat cup accepts double open end or single open end cartridges

### Housing Specifications

#### Maximum Operating Pressure:

Stainless Steel: 150 psig (10.3 bar) @ 200°F (93°C)

**NOTE:** Maximum operating pressure ratings are vessel ratings only. Safe operating temperature and pressure will depend on filter cartridge and gasket/O-ring used. For cyclical service please consult your Pall representative.

#### Construction:

Head & Shell: 316L Stainless Steel  
Vent Plug: 316L Stainless Steel  
Drain Plug: 316L Stainless Steel  
Seat Cups: 316L Stainless Steel

#### Non-Code:

316L Stainless Steel  
316L Stainless Steel  
316L Stainless Steel  
316L Stainless Steel

#### Connections:

##### Inlet/Outlet

Standard: 3" (7.6 cm), 150 lb. ANSI raised face flange

Optional: 3" (7.6 cm), butt weld

Drain/Vent: ½" (1.3 cm) NPTF

#### Shell O-ring:

Ethylene Propylene, Fluorocarbon Elastomer, Silicone

#### Closure:

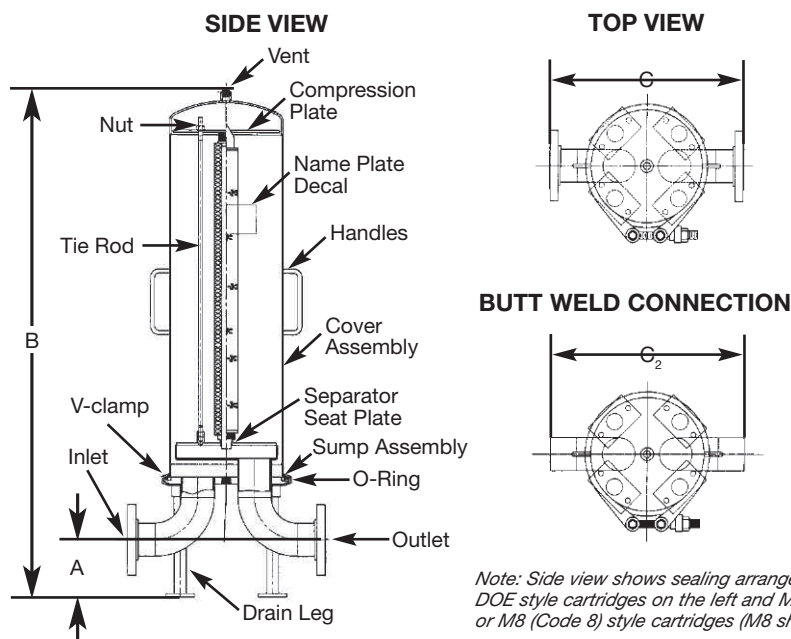
V-Band clamp



## Dimensional Data (nominal)

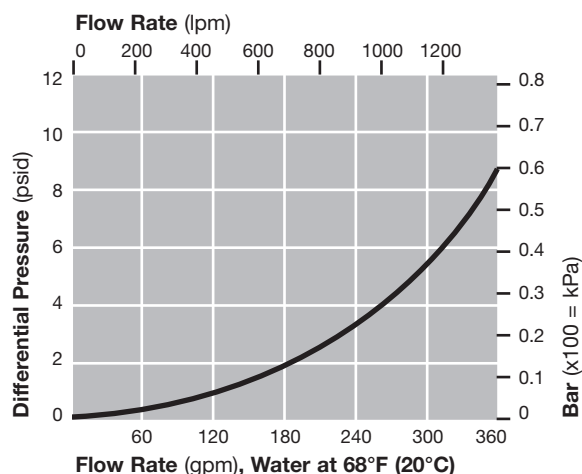
Model	Liquid <sup>1</sup> Flow Rates - gpm (lpm)	Dimensions - inches (cm)				Maximum Cartridge Diameter - inches (cm)	Weight - pounds (kg)	Minimum Clearance - inches (cm)
		A	B	C	C <sup>2</sup>			
12MEGA <sup>+</sup> 1-3F	to 100 (379)	6 (15.2)	36 (91.4)	21 (53.3)	20 ½ (52.1)	2 ¾ (7)	205 (93)	55 (139.7)
24MEGA <sup>+</sup> 2-3F	to 200 (757)	6 (15.2)	46 (116.8)	21 (53.3)	20 ½ (52.1)	2 ¾ (7)	220 (100)	76 (193)
36MEGA <sup>+</sup> 3-3F	to 300 (1136)	6 (15.2)	56 (142.2)	21 (53.3)	20 ½ (52.1)	2 ¾ (7)	235 (107)	96 (243.8)
48MEGA <sup>+</sup> 4-3F	to 300 (1136)	6 (15.2)	66 (167.6)	21 (53.3)	20 ½ (52.1)	2 ¾ (7)	250 (113)	117 (297.2)

<sup>1</sup> - Dependent upon cartridge selection, fluid viscosity, and allowable pressure drop. See graph below for housing pressure drop at various flow rates. Refer to cartridge nomograph to determine initial pressure drop due to the filter cartridge. The 48MEGA<sup>+</sup> may be used to provide longer cartridge life and lower initial pressure drop, however, a flow rate in excess of 300 gpm (1135 lpm) is not recommended with 3" connections.



Note: Side view shows sealing arrangement for DOE style cartridges on the left and M3 (Code 3) or M8 (Code 8) style cartridges (M8 shown).

## Housing Differential Pressure vs. Liquid Flow Rate



For liquids other than water, multiply differential pressure by fluid viscosity (cP).

## Part Numbers/Ordering Information

MEGA<sup>+</sup> ● - ◆ (e.g., 12MEGA<sup>+</sup>2-3F)

Code	No. of 10" Equivalents
12	12
24	24
36	36
48	48

Code	No. of 10" Equivalents Per Column
1	1
2	2
3	3
4	4

Code	Inlet/Outlet Connection Sizes
3F	3", ANSI raised face flange (standard)
3	3", butt weld



25 Harbor Park Drive  
Port Washington, New York 11050

+1 888 873 7255 (toll free in U.S. only)  
+1 516 484 3600 phone  
+1 516 484 0364 fax

Visit us on the Web at [www.pall.com](http://www.pall.com)

Pall Corporation has offices and plants throughout the world in locations including: Argentina, Australia, Austria, Belgium, Brazil, Canada, China, France, Germany, India, Indonesia, Ireland, Italy, Japan, Korea, Malaysia, Mexico, the Netherlands, New Zealand, Norway, Poland, Puerto Rico, Russia, Singapore, South Africa, Spain, Sweden, Switzerland, Taiwan, Thailand, United Kingdom, United States, and Venezuela. Distributors are located in all major industrial areas of the world.