

Features

- Flows to 50 L/min (13 US gpm)
- Pressures to 250 bar (3625 psi)
- Port size 1/2", 5/8" and M22
- Out-to-in filter element flow path

Notes and Specifications Filter Housing

- **Maximum Allowable Working Pressure:**
250 bar (3625 psi)
- **Rated Fatigue Pressure:**
0-240 bar (0-3480 psi) per NFPA T2.06.01R2-2001 CAT C/90/(1 million cycles), verified by testing at 0-280 bar (0-4060 psi) for 1 million cycles. Contact Pall for applications with higher pressures at lower cycles
- **Fluid Compatibility:**
Compatible with all petroleum oils, water glycols, water-oil emulsions and most synthetic hydraulic and lubrication fluids
- **Temperature Range:**
Fluorocarbon Seals:
-29 °C to 120 °C (-20 °F to 250 °F)
50 °C (122 °F) maximum in HWCF or water glycol fluids
- **Bypass Valve Settings:**
4.5 ± 0.5 bard (65 ± 7 psid)
- **Indicator Pressure Settings:**
3.4 ± 0.4 bard (50 ± 6 psid)
- **Materials of Construction:**
Head: SG Iron
Bowl: Carbon steel

Filter Element

- **Filter Element Burst Pressure:**
10 bard (145 psid)
- **Filter Element Construction:** Inorganic fibers impregnated and bonded with epoxy resins. Polyamide endcaps. Corrosion protected carbon steel core

New: G210 Series Versalon™ High Pressure Filters

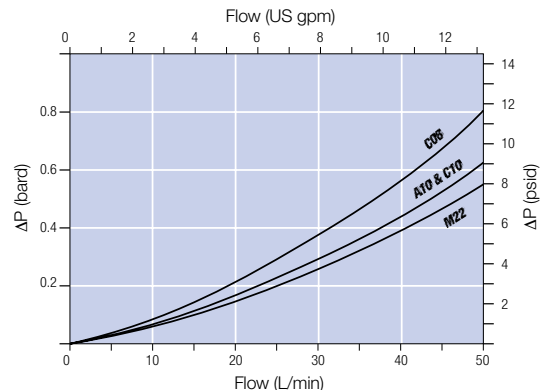


G210 Series filter housing

Pressure Drop Information

Housing pressure drop using fluid with 0.9 S.G.

Housing pressure drop is directly proportional to specific gravity.



HCG200 Filter Elements – bard/1000 L/min (psid/US gpm)

Length Code	KN	KS	KD	KT
04	9.35 (0.51)	6.41 (0.35)	4.94 (0.27)	3.92 (0.21)
08	4.90 (0.27)	3.33 (0.18)	2.56 (0.14)	2.04 (0.11)

Multiply actual flow rate times factor in table above to determine pressure drop with fluid at 32 cSt (150 SUS), 0.9 S.G. Correct for other fluids by multiplying new viscosity in cSt/32 (SUS/150) x new S.G./0.9. Note: factors are per 1000 L/min and per 1 US gpm.

Sample ΔP calculation

G210 Series 8" length housing with M22 ports using KN grade media. Operating conditions 50 L/min (13 US gpm) flow rate using a hydraulic fluid at 45 cSt and specific gravity (s.g.) 1.2.

$$\begin{aligned}
 &\text{Total Filter } \Delta P \\
 &= \Delta P \text{ housing} + \Delta P \text{ element} \\
 &= (0.55 \times 1.2/0.9) \text{ bard (housing)} \\
 &\quad + ((50 \times 4.9/1000) \times 45/32 \times 1.2/0.9) \text{ bard (element)} \\
 &= 0.73 \text{ bard (housing)} + 0.46 \text{ bard (element)} \\
 &= \mathbf{1.19 \text{ bard (17.3 psid)}}
 \end{aligned}$$

Dimensional Drawings

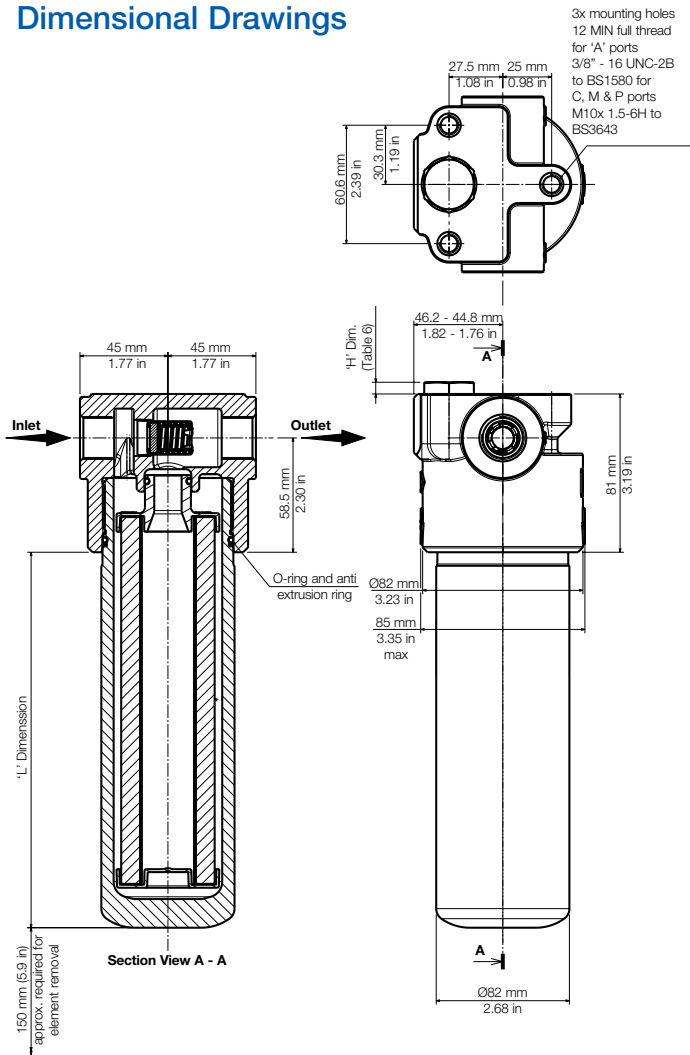


Table 1: Housing Port Style Options

Code	Port Style
A	Straight threads & O-Ring boss to SAE J1926
M	Metric threads to BS3643
C	BSP threads to ISO228

Table 2: Housing Port Sizes Options

Code	Port Size	Styles Available
08	Nominally 1/2"	'C'
10	Nominally 5/8"	'A'
22	M22x1.5-6H THD	'M'

Table 3: Filter Element Options

Code	$\beta_{x(c)} \geq 1000$ based on ISO 16889
KN	7
KS	12
KD	19
KT	22

Table 4: Length Options

Housing Code	Element Code	'L' Dim*
R	4	100.2 mm (3.95 in)
S	8	192.9 mm (7.59 in)

* Nominal length

Table 5: Differential Pressure Indicator Options

Code	Indicator	'H' Dim.
0	Unmachined indicator port	-
1	Machined port with plastic shipping plug Indicator must be installed prior to operation. Only available to distributors	-
B	Bleed plug and seal in place of indicator	16
C	Electrical switch - normally closed, automatic reset Connection: Deutsch DT042P	74
D	Visual indicator, window changes from white to red on indication. Automatic reset	36
U	Electrical switch - normally closed, automatic reset Connection: AMP junior timer connector	67

Ordering Information

Housing P/N:

HZG210 G X160

Table 1 Table 2 Table 3 Table 4 Table 5

Element P/N: HCG200F Z

Table 3 Table 4

Seal P/N: G200SKZ



25 Harbor Park Drive
Port Washington NY 11050
+1 516 484 3600 telephone
+1 800 289 7255 toll free US

Portsmouth - UK
+44 (0)23 9233 8000 telephone
+44 (0)23 9233 8811 fax
industrialeu@pall.com

Filtration. Separation. Solution.SM



Visit us on the Web at www.pall.com

Pall Corporation has offices and plants throughout the world. For Pall representatives in your area, please go to www.pall.com/contact

Because of technological developments related to the products, systems, and/or services described herein, the data and procedures are subject to change without notice. Please consult your Pall representative or visit www.pall.com to verify that this information remains valid.

© Copyright 2013, Pall Corporation. Versalon, Pall and **PALL** are trademarks of Pall Corporation. © Indicates a trademark registered in the USA. Better Lives. Better Planet and **Filtration. Separation. Solution.SM** are service marks of Pall Corporation.